

SHIN-DANSHI



Soft textured paper that reproduces the feel of *Danshi*, a Japanese paper with fine but distinct wrinkles. SHIN-DANSHI, which literally means “new *Danshi*”, comes in 24 rich color variations.

Swatch book: Japanese Master collection G-3 / European collection C-2

Size: 1,091x788mm, S/G

Grammage: 76, 93, 128, 157, 186gsm

Color: 24 colors

Printing Tips

This paper can be used with below printing and converting techniques.

- Offset printing. Increase the printing pressure.
- Inkjet printing
- Hot stamping
- Laser printing can be an option, but not recommended due to the uneven fixability of toner.

*Please note that above information is just for your reference and does not guarantee the printing result.
We recommend you to test before every use to achieve the best appearance.

Applications

Rigid Box, Wrapping Paper, Shopping Bag, Label, Book Cover, End Paper

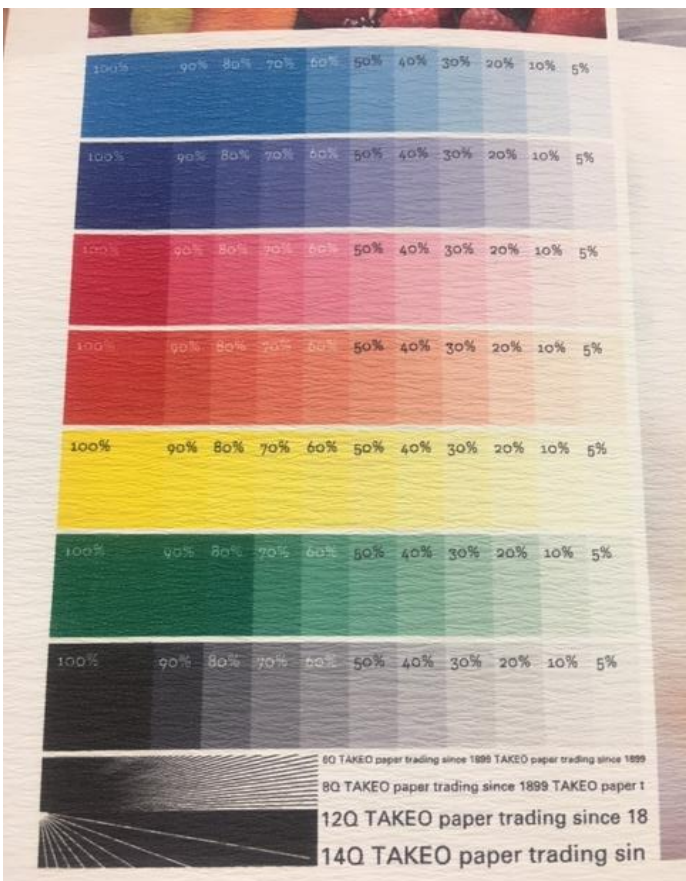
Others

- ECF Pulp contained

Range chart

Color			Grammage (gsm)				
			76	93	128	157	186
			65kg/M	80kg/M	110kg/M	135kg/M	160kg/M
1	snow	雪	✓	✓	✓	✓	✓
2	white	白	✓	✓	✓	✓	✓
3	ivory	クリーム	✓	✓	✓		✓
4	beige	古染	✓	✓	✓		✓
5	vellum white	きなり	✓	✓	✓		✓
6	cherry	にぶ桜	✓	✓	✓		✓
7	vermilion	朱	✓	✓	✓		✓
8	wine red	えんじ	✓	✓	✓		✓
9	deep indigo	あい	✓	✓	✓		✓
10	tan	とのこ		✓	✓		✓
11	dark gray	濃鼠			✓		✓
12	black	黒			✓		✓
13	light brown	白茶			✓		✓
14	buff	うす鼠					
15	pink	桃			✓		✓
16	orange	こがね			✓		✓
17	purple	藤紫			✓		✓
18	dark brown	たいしゃ			✓		✓
19	scarlet	しんく			✓		✓
20	dark blue	はなだ			✓		✓
21	moss green	濃松葉			✓		✓
22	Sepia	セピア			✓		✓
23	charcoal	すみ					
24	stone	赤鼠					
25	charcoal gray	チャコールグレー			✓		
26	rouge	あずき			✓		
27	sage green	せいじ			✓		

< Inkjet printing > machine: Canon PIXUS ip7230



< Laser printing > machine: RICOH MP C3503

*Laser printing can be an option, but not recommended due to the uneven fixability of toner.

